

STAGE 2
YEARS 3 AND 4

Balgowlah North Public
School

We acknowledge and respect the traditional custodians on whose land our school rests. Their footsteps and whispers blow in the wind, drift on the clouds, remain deep in the sandstone and float on the waterways of this place. Their memories and Dreaming stories will continue to connect us to the land and guide future generations of our school community.

Country is alive if you take the time to look, listen and learn.

Welcome

An overview of this evening:

- * Introduction to the Stage 2 teachers
- * Organisation and procedures
- * Communication
- * Learning overview

Our Stage 2 Team

Katherine Evans 3E

Molly McIndoe 3M

Patricia Vitale 4/3V

Sarah King (Mon-Wed) and Julia Gough (Thur-Fri) 4KG

Olivia Wakelin and Eliza McAllister (Wed) 4W

S2 Assistant Principal: Sarah King

Communicating with the School

Clear, open and effective communication between parents and teachers is vital to ensuring our students are supported and meet their full potential.

If you wish to discuss any aspect of your child's learning, development or well-being it is important you contact your child's teacher to schedule a time for an interview.

All email correspondence should be directed to the school email address. Please put your child's name and class in the subject heading.

balgowlahn-p.school@det.nsw.edu.au

Communicating with the School

Contact	Concern/Question/Information
School Office	<ul style="list-style-type: none">· Health issues – more serious e.g. ongoing medication· Administering of medication at school – short term e.g. antibiotics· Custody/Court Orders· Absent notes via the school app· Change of address or emergency contact details· Enrolment forms· Application for exemption (leave longer than 15 days needs approval)· Child leaving the school· School policy or process· Excursion/Incursion<ul style="list-style-type: none">○ Permission Note○ Payments
Classroom Teacher	<ul style="list-style-type: none">· Academic progress of child· Welfare of own child· Health issues - minor· Behaviour or actions of a student (in class/playground)· Parent-Teacher Interviews· Student Login details

Diverse Learner's Team

Our Diverse Learner's Team supports any students with additional needs. These may be academic, social, emotional or behavioural needs.

If your child's class teacher is concerned about your child they will discuss these concerns with you. If it is deemed necessary for these issues to be referred to the Diverse Learner's Team, your consent will be obtained.

The Diverse Learner's Team will develop a plan to support your child and you will be updated on how program modifications and adjustments are progressing.

Our Diverse Learner's Team is comprised of our Principal, Deputy Principal, School Counsellor, Learning and Support Teacher and the Assistant Principal and Class Teacher of identified students.

Parent Referral Process

Parents may also refer their child to the Diverse Learner's Team. If you wish to do this, please contact our school office for the relevant parent referral forms.

At times, some students may benefit from regular appointments with speech therapists, psychologists and occupational therapists. These appointments should be made out of school hours. In the rare occurrence that this is unable to happen, parents are to apply for leave from school to the principal.

If parents wish to apply to the principal to remove their child from school for regular appointments, such as psychology, speech therapy and occupational therapy, they are to provide:

- A completed form for school counsellor assistance and a Diverse Learners Team parent referral form. These forms can be obtained by contacting the school via email or at the school office.
- Any reports from allied health professionals that have been completed that support the need for withdrawal from class.
- A letter to the principal from the parents outlining the reasons for why their child is to be considered for approved leave.

Parent Referral Process

The information provided will be considered and discussed at an upcoming Diverse Learners Team meeting. The Diverse Learners Team consists of the School Counsellor/Psychologist, Deputy Principal, Principal and Learning and Support Teachers.

The Deputy Principal will then advise the outcome of the meeting. Leave is not guaranteed.

If leave is approved, then students are to be signed out at the office by the parent or guardian as close to the appointment as reasonably possible. Students are expected to return to school after the appointment as soon as possible. Parents should continue to speak with the specialist to organise these appointments to be out of school hours as soon as an availability arises.

Attendance

Establishing positive attendance practices for your child is essential.

Partial absences must be recorded at the school office when the child enters the school late or leaves early for any reason.

Appointments should occur outside of school hours wherever possible.

Class Parents

Your role

- Help with communication between the families of children in the class, with the teacher, school and P&C Committees.
- Help to make families feel part of the school.

What does the Class Parent do?

- Make a list of names and contact details of class families.
- Support your class teacher as required.
- Email important information to class families from the school or P&C Committees.
- Organises social activities for class families.
- Attend P&C Meetings or read the minutes if unable to attend.

Stage 2 Curriculum

The NSW syllabus is organised in stages. Our Year 3 and 4 students are working towards meeting the outcomes of the Stage 2 syllabus.

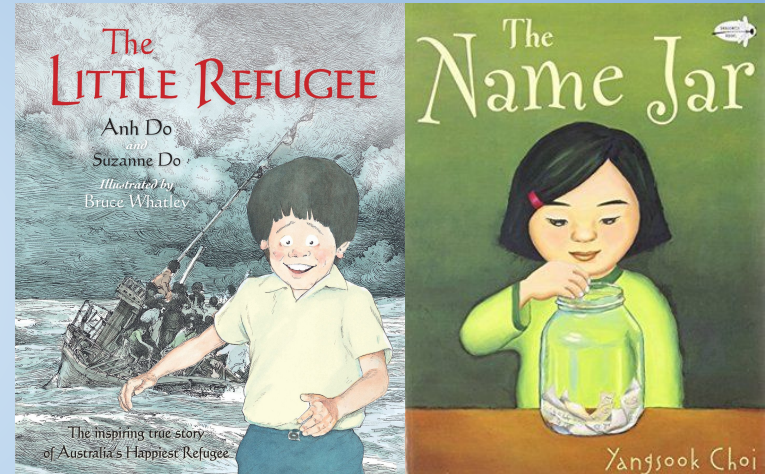
Our teachers are experts at differentiating their programs, lessons and teaching strategies to meet the needs of each and every student.

Our Term 1 areas of study

English

This term, Stage 2 will explore the concept of ‘Belonging’ through delving into a variety of Quality Texts including “The Little Refugee” and “The Name Jar”. Students respond to and compose texts based on inquiry questions, such as:

- How does the author represent belonging in this text?
- How has the author used literary techniques to make you feel empathetic?
- Why did the author write this story?
- What important concepts are addressed in this book? Why are they important?



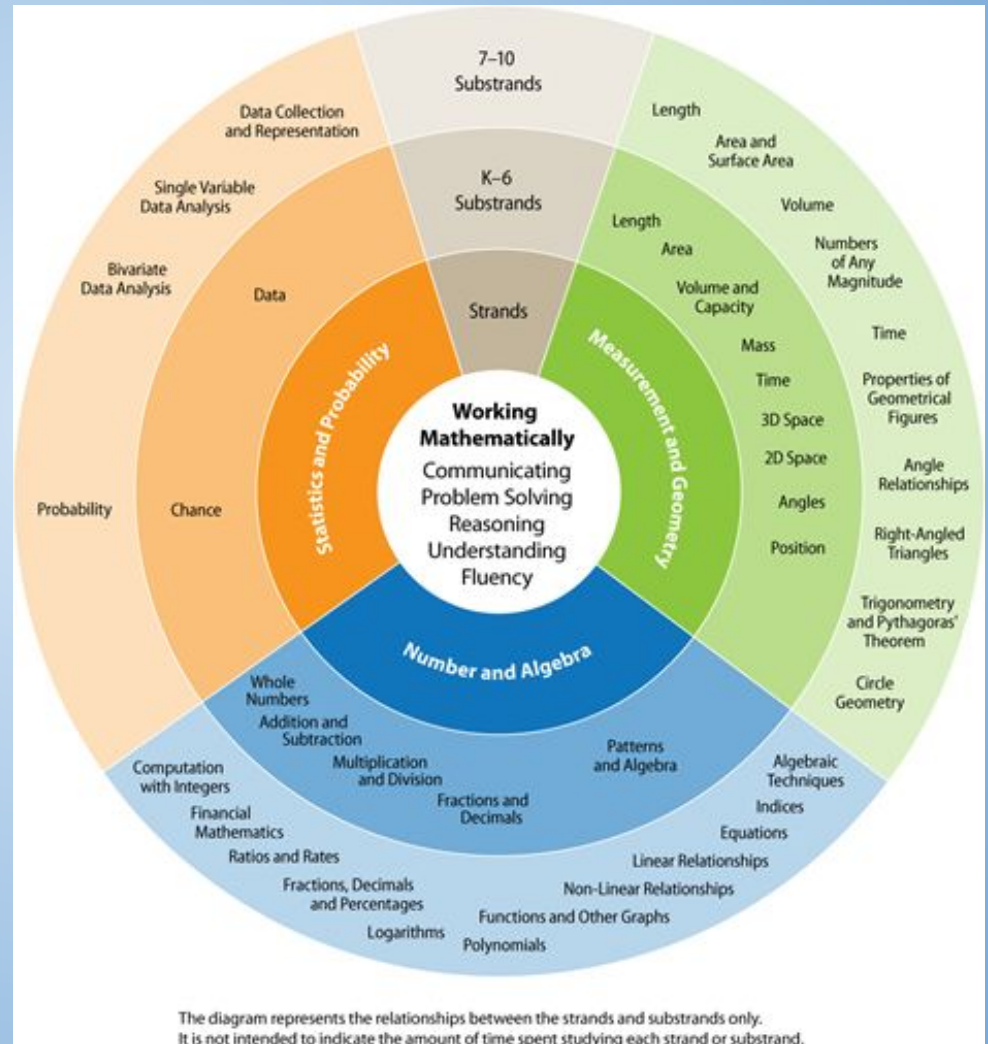
Student understanding is deepened through participation in Literature Circles, which focus on developing reading fluency and skills in literal and inferential comprehension. We are fortunate to have our Learning and Support Teachers, Cassie Cowburn (Year 3) and Amanda Mason (Year 4) working with every Stage 2 class this term.

We continue to embed the Seven Steps writing model into our Quality Text programs. Explicit spelling lessons continue to be supported through the use of the Soundwaves program.

Maths

We aim to design mathematics lessons that allow our students to develop and refine their skills and apply them to conceptual problems that involve critical thinking and multi-operational problem solving.

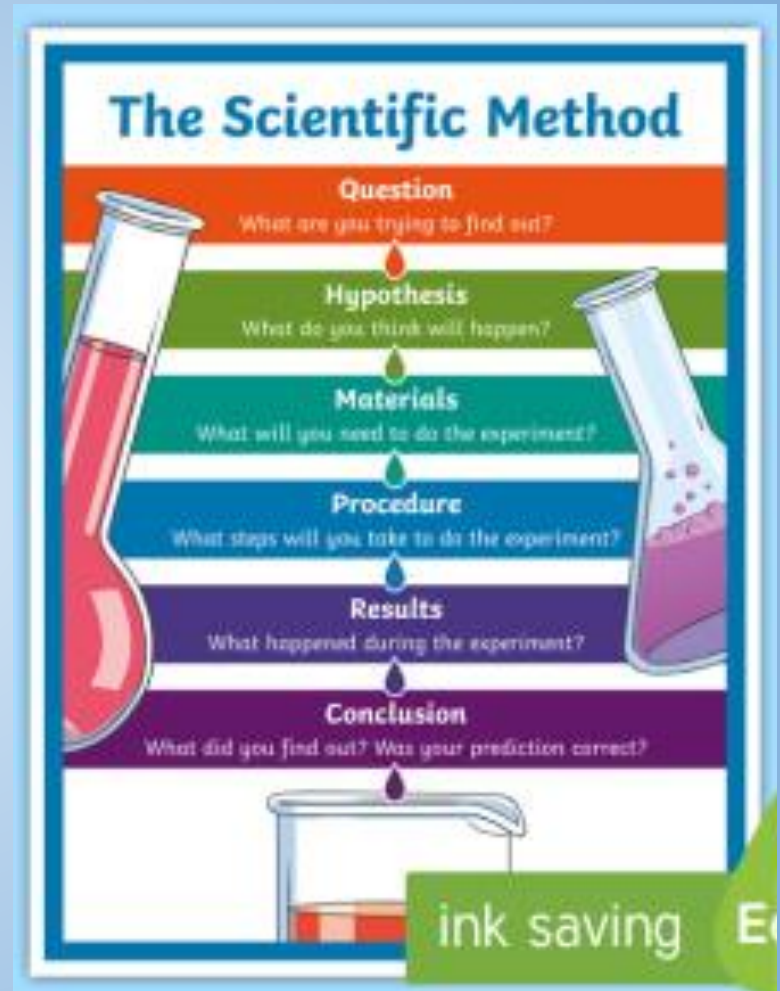
This year all students have access to the online Mathletics program. Passwords will be sent home and teachers will assign program related activities that may be completed at school or home as required.



Science

In our unit, Material World, we will be conducting hands-on science investigations to identify the physical properties of natural and processed materials, and how their properties influence their use. This will include looking at the differences between liquids, solids and gases. Students will be involved in STEM investigations into how the properties of different materials can be applied to real world applications.

An important part of this process is using the Scientific Method to create questions, conduct experiments and draw conclusions.



History/Geography Library



Library lessons occur every week with our Teacher Librarian, Mrs Debbie Horsley. This program supports our History/Geography programs taught in the classroom.

This allows for our students to develop their research skills as they explore and investigate historical events and geographical concepts.

In Semester One, we will be learning about Australian history including an investigation into multicultural Australia and our Indigenous past.

Students in stage 2 will be have a borrowing session in the library on a Thursday odd weeks.

The library is open at lunch time on Monday, Tuesday and Thursday for reading, drawing and quiet games.



Technology

Stage 2 students will use iPads and laptops to support their learning.

We value safe, respectful and responsible digital citizenship and expect our students to uphold the agreement they have signed.

We will be incorporating new, exciting robotics kits into our program in 2022 and look forward to the innovative opportunities this will provide our students in areas like coding and problem solving.

At school, mobile phones need to be in bags, switched off and may not be used during school hours. Smart Watches cannot be used to send and receive messages or receive phone calls. If you need to get a message to your child during the day, please contact the front office directly.



P.E - Physical Education

Students will have a P.E session once a week with Mrs Kelly. Students are to wear their sports uniform for P.E lessons and sport on Friday. If your child is injured and unable to participate please send in a note.

This term in Stage 2 Physical Education

we are focusing on invasion games

- touch football and netball.

We will work on finding space,
marking a player and teamwork.

We will also begin to examine
aspects of fitness.



P.D.H - Personal Development & Health

For Personal Development and Health in Term 1, Stage 2 will explore strategies for building and maintaining healthy friendships through the URSTRONG program.

URSTRONG is a K-6 friendship skills program that creates cultures of kindness in schools. The child-friendly approach to navigating the ups and downs of friendships will help students feel empowered, learn resilience and resolve conflicts.

Parents have access to a free membership. See the [Week 3 newsletter](#) for details.



Creative and Performing Arts

Mrs Eliza McAllister will be teaching Dance in Term 1 and Music in Term 2 this semester.

Stage Two will begin 2022 by participating in weekly Dance lessons and have already started learning about performing, composing and appreciating dance. Lessons include a warm up/stretch, explicit teaching, learning activities, reflection time and a cool down/meditation. The learning will also have a focus on Aboriginal Dance. Students will continue with Music in Term 2.

Extra Curricular Opportunities in Creative Arts

All students in Stage Two are invited to participate in:

- ❖ Concert Band - Monday morning and Thursday lunch
- ❖ Senior Band - Tuesday and Thursday morning
- ❖ Junior Band - Monday lunch and Wednesday morning
- ❖ Beginner Strings - Thursday morning
- ❖ Choir for Years 3-6 - Tuesday lunch
(Hall with Mrs Harris and Mrs McAllister)
- ❖ Drama Ensemble Years Y3 and 4 - Wednesday lunch
(Dance/Music Room with Miss Witton, Mrs Short and Mrs McAllister)

Visual art lessons will be taught by the class teacher.



Homework

This term, homework will be project based for all of Stage 2. Projects are linked to curriculum to compliment learning. This will begin in Week 6 of Term 1 and is due in Week 11. Students will present projects in class.

Each week students are encouraged to practise spelling using Soundwaves and maths skills using Mathletics, as well as read quality texts daily. Wushka is also available to students in Stage 2 to supplement their reading

★ *Daily reading is the most important of all homework tasks. If you are finding it challenging to get through homework, we ask that you prioritise your child's reading.*

Homework will be accessed through Google Classroom.

Home learning whilst isolating after contact with a Covid case.

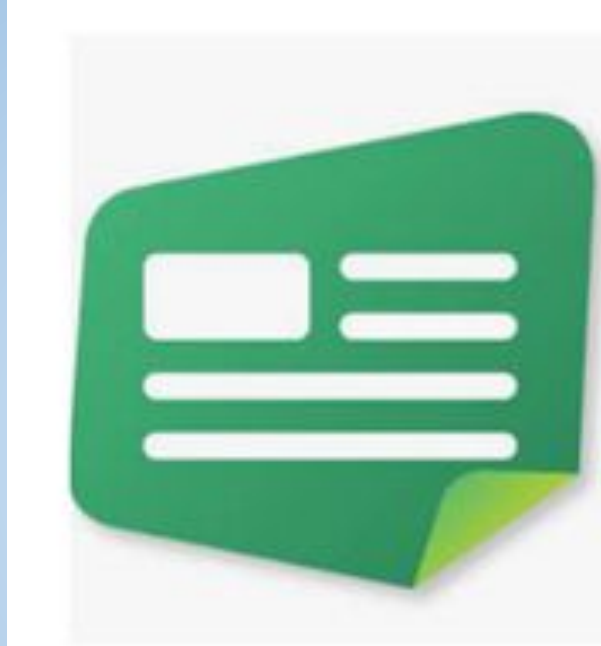
- ★ Digital Learning Packs are organised into grades.
- ★ Each learning pack contains 5 days of learning activities.
- ★ You should start with the first pack (Kangaroo) and commence on day one regardless of the timing of your period of isolation.

<https://education.nsw.gov.au/teaching-and-learning/learning-from-home/learning-at-home/2022-digital-learning-packs/primary>

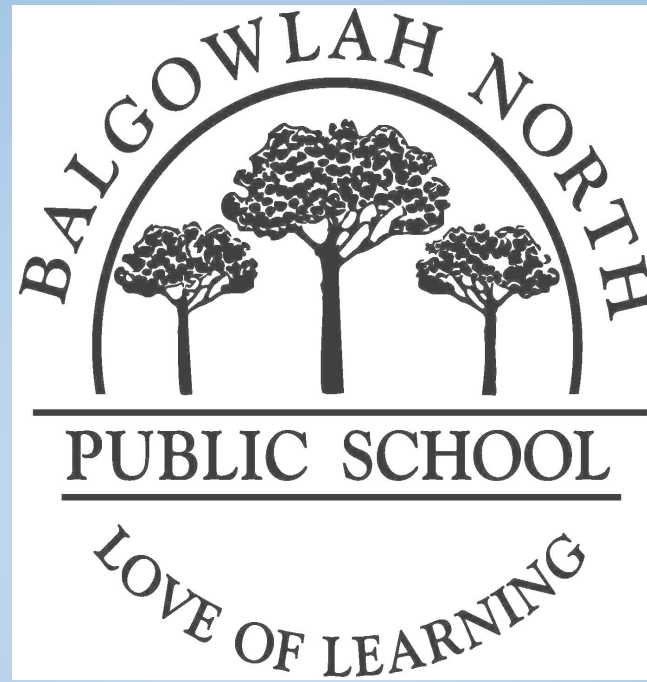
- ★ Students isolating and unable to attend face to face learning will be counted as attending school if there is reasonable evidence of participation in learning from home.
- ★ In Stage 2, students are asked to upload evidence of learning via Google Classroom or bring hard copies when they return to school.

Students who are unwell are not expected to complete learning from home.

SchoolZine



Please ensure you download the Schoolzine app for all communication in 2022.



Thank you